

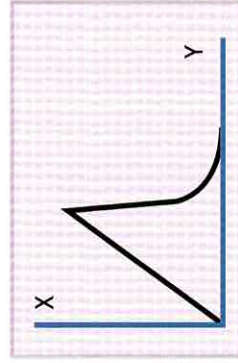
# ULTRA FIBRE CHIP DAEIN CORPORATION

## Merits of Ultra Fibre Chip

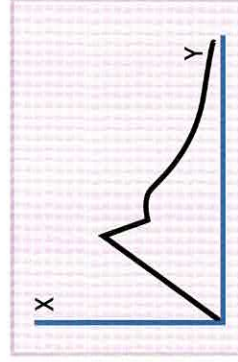
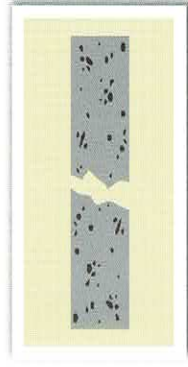
- Has high adhesive strength with concrete due to high aspect ratio.
- Because both ends of the product has a hook like shape, ductility and fatigue resistance including softness, impact resistance, and flexural strength and crack inhibition effect is increased.
- Because of bundle shape, it can be dispersed evenly in mixing concrete without fibre balling

## Stress of Steel Fibre Reinforced Concrete

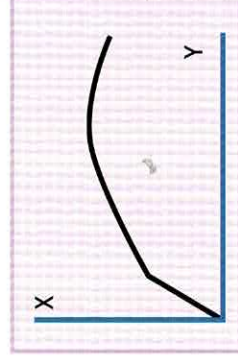
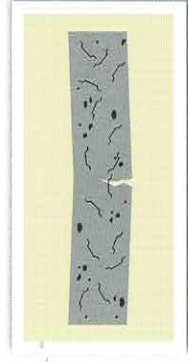
(X axis: external stress Y axis : internal stress)



Input amount of Ultra Fibre Chip : 0kg/m<sup>3</sup>



Input amount of Ultra Fibre Chip : 10kg/m<sup>3</sup>



Input amount of Ultra Fibre Chip : 40kg/m<sup>3</sup>



## Value of Steel Fibre

Steel fibre for concrete reinforcing is used after produced by diverse shape and value according to its function and application field. So it represents each size as aspect ratio.

- Aspect ratio is the value of nominal length of steel fibre divided by diameter or nominal diameter.



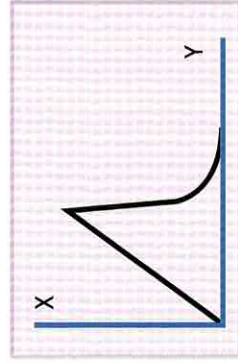
# ULTRA FIBRE CHIP DAEIN CORPORATION

## Merits of Ultra Fibre Chip

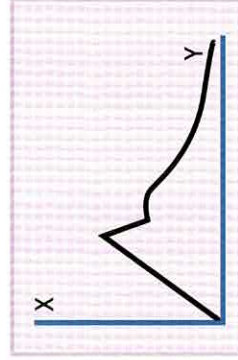
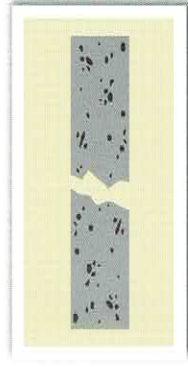
- Has high adhesive strength with concrete due to high aspect ratio.
- Because both ends of the product has a hook like shape, ductility and fatigue resistance including softness, impact resistance, and flexural strength and crack inhibition effect is increased.
- Because of bundle shape, it can be dispersed evenly in mixing concrete without fibre balling

## Stress of Steel Fibre Reinforced Concrete

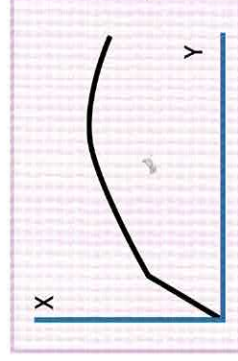
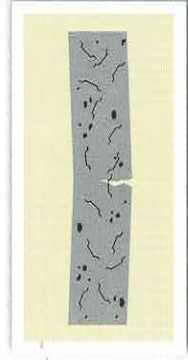
(X axis: external stress Y axis : internal stress)



Input amount of Ultra Fibre Chip : 0kg/m<sup>3</sup>



Input amount of Ultra Fibre Chip : 10kg/m<sup>3</sup>



Input amount of Ultra Fibre Chip : 40kg/m<sup>3</sup>



## Value of Steel Fibre

Steel fibre for concrete reinforcing is used after produced by diverse shape and value according to its function and application field. So it represents each size as aspect ratio.

- Aspect ratio is the value of nominal length of steel fibre divided by diameter or nominal diameter.

